

nisho



2023 PRODUCT CATALOG





**Designed through
innovation.**

**Designed for
life.**

The nisho fire collection is designed to bring people together. We believe fire features can be the centerpiece for outdoor gathering and conversation.





What makes Nisho different?



DESIGNED FOR GATHERINGS

Nisho fire features intentionally break the mold and strive to create innovative, functional centerpieces within your outdoor space. Each is designed for ample food and drink space for those moments when everyone is gathered around.



BEAUTIFULLY CRAFTED

- Crafted to be modern, simple, and sleek, Nisho has a collection of fire features that people will gush about long after they've seen them. It's all in the details.

The finish is coated with a sealer to protect it from the elements or any spills.

- Sealer preserves the life of the vessel.
- Spills happen. Nisho is easy to clean.

Custom designed burners will warm your bodies, not your drinks.

- The flame is adjustable to accommodate any type of gathering (intimate or entertaining).
- Each unit is specifically designed at 14" for these reasons

(Except Nyx = 16", Notus & Pallas = 12")

The flame is at an optimal height both for warmth and visual interest.

- The lower profile makes the style more sleek.
- The height is more comfortable for seating or kicking your feet on.
- The height is also more comfortable for reaching food & drinks.

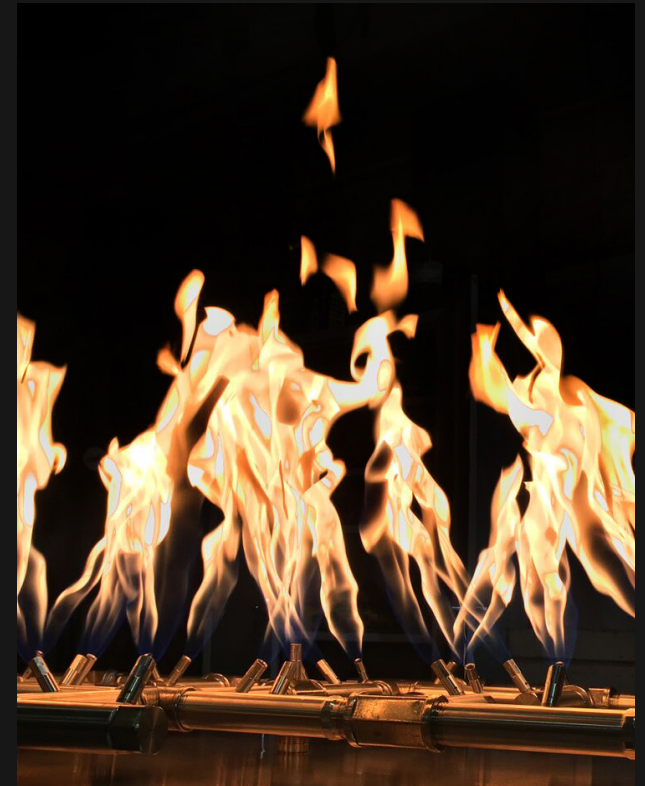


Designing the perfect flame.



BRASS IS BETTER

Nisho fire pits utilize Warming Trends CROSSFIRE™ Burners are made entirely from brass to provide you with the best quality product. Unlike other burners, often made from stainless steel, brass resists corrosion and will not rust, which eliminates the need for replacements. These brass burner orifices are also designed to prevent "whistling" sometimes heard coming from stainless steel burners. We are so confident that the product will last, we offer a lifetime warranty on all brass products.



TALLER, BRIGHTER FLAME

Our fire pits are 120K-190K BTU. Oh yes, really. This produces a flame that is twice the size of typical prefabricated features, but uses roughly half the amount of natural gas used by other features. The patent-pending technology behind the CROSSFIRE™ Brass Burner uses a specific air-to-gas ratio at the point of combustion to produce a taller, brighter, fuller flame that resembles a natural, wood-burning fire.



Atlas

Like its namesake, the Nisho Atlas is strong, resilient, and ready to carry the weight of your world.



DIMENSIONS L 60" x W 30" x H 14"

MATERIAL GFRC (Glass Fiber Reinforced Concrete)

BURNER Warming Trends Crossfire Brass Burner 120K BTU

COMPONENTS Key valve, flex hose, metal burner plate

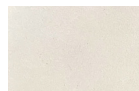
IGNITION Match light with key valve (included) or electronic (available as upgrade)

MEDIA Black rolled lava rock (1-3" size)

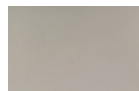
COVER Black marine grade cover with Nisho logo

WEIGHT Approximate weight: 200-400 lbs

COLOR FINISHES



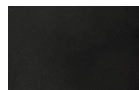
Birch



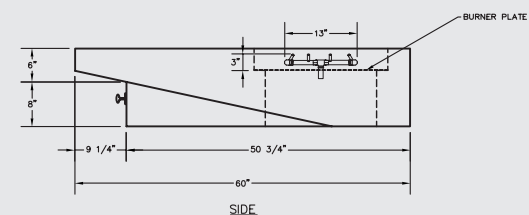
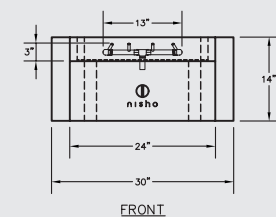
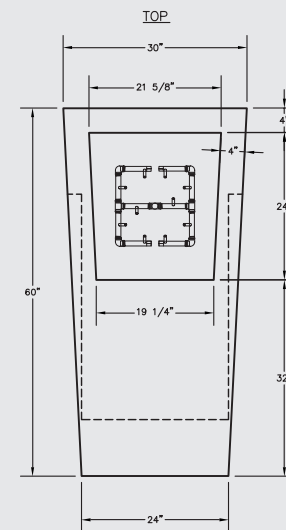
Smoke



Carbon



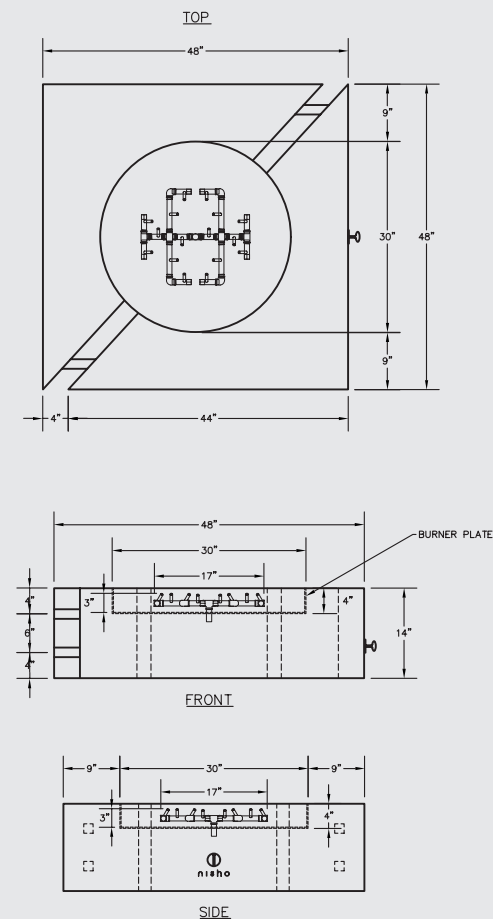
Onyx



PRICE: \$9,200

Chaos

As the name implies, the Chaos is limitless in its design applications. The simple yet elegant shape will naturally draw attention for its style and inviting warmth.



DIMENSIONS L 48" x W 48" x H 14"

MATERIAL GFRC (Glass Fiber Reinforced Concrete)

BURNER Warming Trends Crossfire Brass Burner 180K BTU

COMPONENTS Key valve, flex hose, metal burner plate

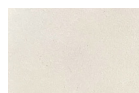
IGNITION Match light with key valve (included) or electronic (available as upgrade)

MEDIA Black rolled lava rock (1-3" size)

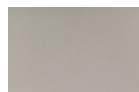
COVER Black marine grade cover with Nisho logo

WEIGHT Approximate weight: 200-400 lbs

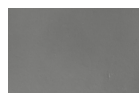
COLOR FINISHES



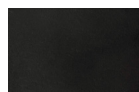
Birch



Smoke



Carbon



Onyx



PRICE: \$9,800

Cronus

Cronus was the Greek God of Time, and we've noticed time tends to slip away sitting beside this one-of-a-kind fire feature.



DIMENSIONS L 48" x W 48" x H 14"

MATERIAL GFRC (Glass Fiber Reinforced Concrete)

BURNER Warming Trends Crossfire Brass Burner 180K BTU

COMPONENTS Key valve, flex hose, metal burner plate

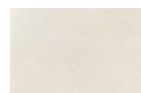
IGNITION Match light with key valve (included) or electronic (available as upgrade)

MEDIA Black rolled lava rock (1-3" size)

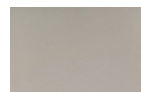
COVER Black marine grade cover with Nisho logo

WEIGHT Approximate weight: 200-400 lbs

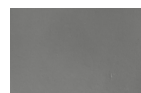
COLOR FINISHES



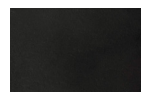
Birch



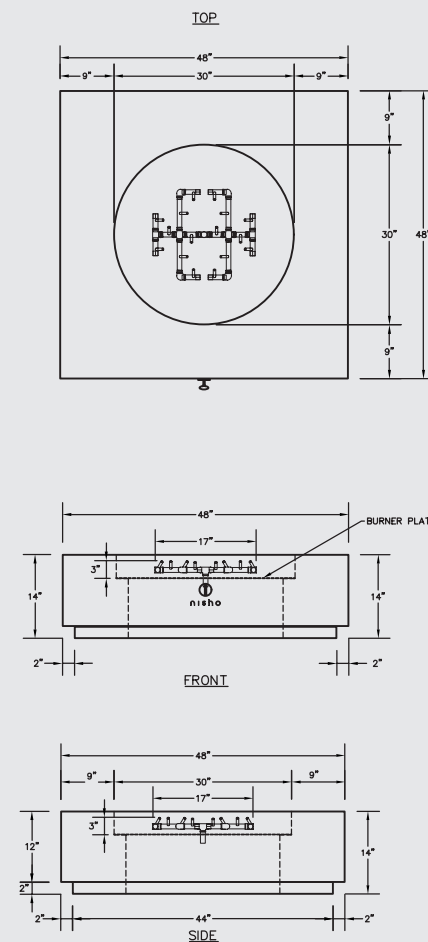
Smoke



Carbon



Onyx



PRICE: \$9,600

Hestia

Hestia – the Greek goddess of hearth and home – is smooth, elegant, and works to embody the fire burning in the heart of every home in Greece.



DIMENSIONS L 48" x W 48" x H 14"
L 36" x W 36" x H 14"

MATERIAL GFRC (Glass Fiber Reinforced Concrete)

BURNER Warming Trends Crossfire Brass Burner 120K BTU

COMPONENTS Key valve, flex hose, metal burner plate

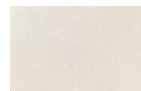
IGNITION Match light with key valve (included) or electronic (available as upgrade)

MEDIA Black rolled lava rock (1-3" size)

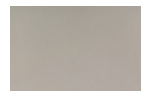
COVER Black marine grade cover with Nisho logo

WEIGHT Approximate weight: 200-400 lbs

COLOR FINISHES



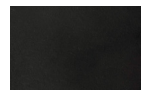
Birch



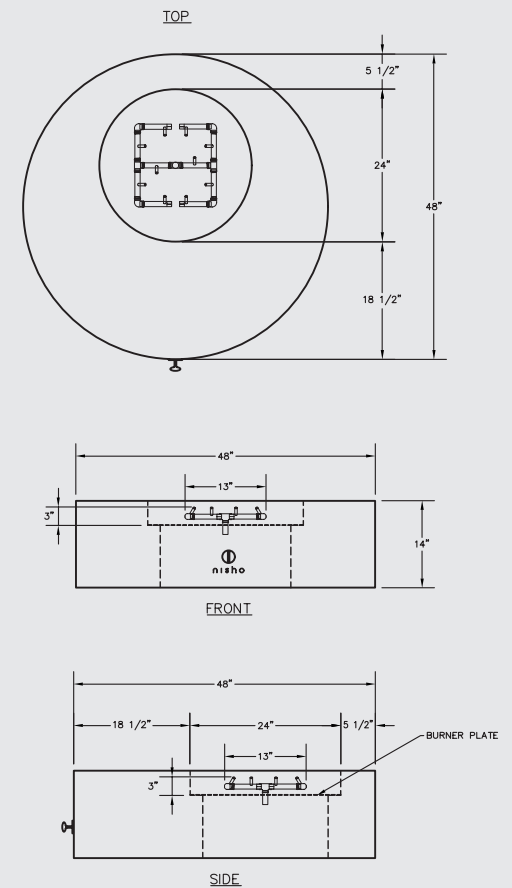
Smoke



Carbon



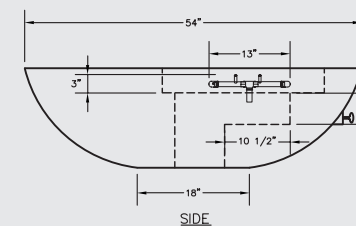
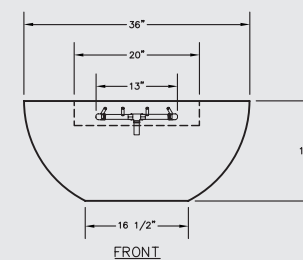
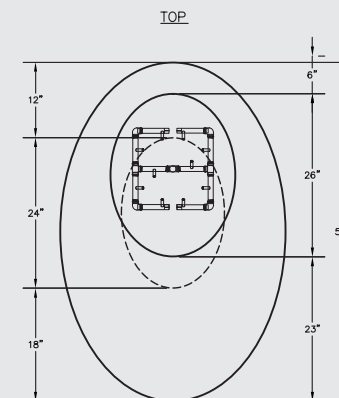
Onyx



**PRICES: \$8,800 (36"),
\$9,200 (48")**

Nyx

Nyx is the Greek goddess of the night. Known for her exceptional power and beauty, the Nyx will help all your loved ones warm even on the coldest of nights.



DIMENSIONS L 54" x W 36" x H 16"

MATERIAL GFRC (Glass Fiber Reinforced Concrete)

BURNER Warming Trends Crossfire Brass Burner 120K BTU

COMPONENTS Key valve, flex hose, metal burner plate

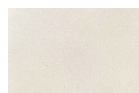
IGNITION Match light with key valve (included) or electronic (available as upgrade)

MEDIA Black rolled lava rock (1-3" size)

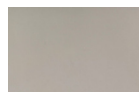
COVER Black marine grade cover with Nisho logo

WEIGHT Approximate weight: 200-400 lbs

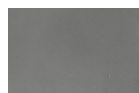
COLOR FINISHES



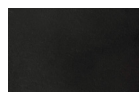
Birch



Smoke



Carbon



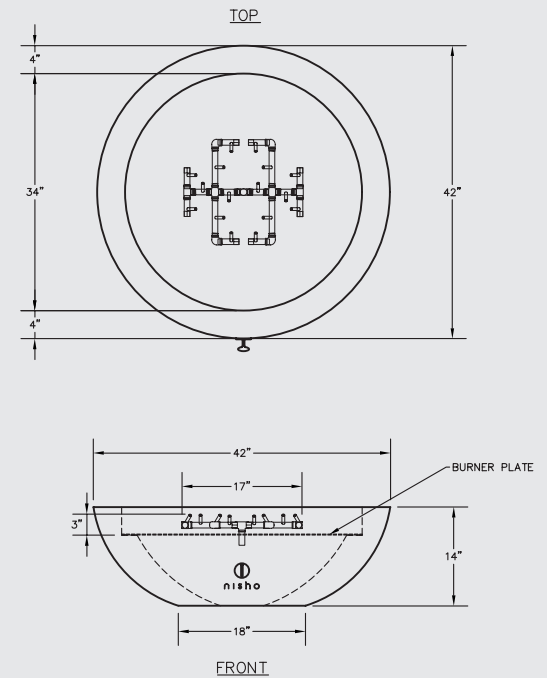
Onyx



PRICE: \$9,200

Kratos

Kratos was the personification of strength and power in Greek mythology. The Nisho Kratos exudes modern day strength and power.



DIMENSIONS L 36" x W 36" x H 14"
L 42" x W 42" x H 14"
L 48" x W 48" x H 14"

MATERIAL GFRC (Glass Fiber Reinforced Concrete)

BURNER Warming Trends Crossfire Brass Burner 180K BTU

COMPONENTS Key valve, flex hose, metal burner plate

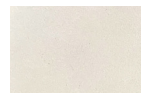
IGNITION Match light with key valve (included) or electronic (available as upgrade)

MEDIA Black rolled lava rock (1-3" size)

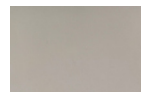
COVER Black marine grade cover with Nisho logo

WEIGHT Approximate weight: 200-400 lbs

COLOR FINISHES



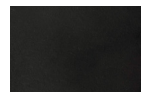
Birch



Smoke



Carbon



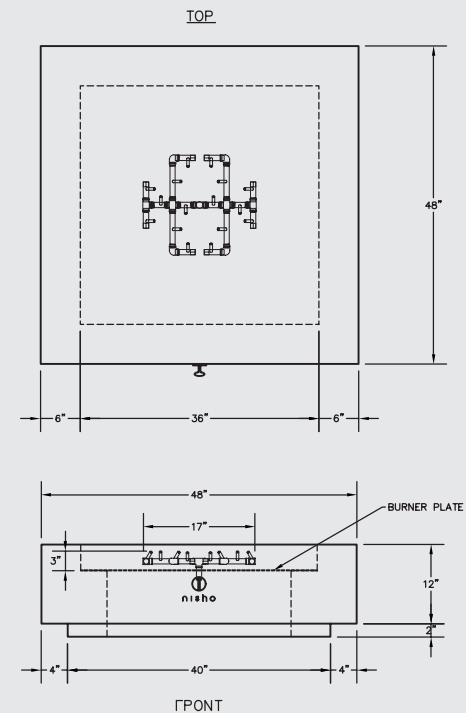
Onyx



**PRICES: \$8,800 (36"),
\$9,200 (42"), \$9,600 (48")**

Notus

Notus was the Greek God of the south wind, one of the four directional Wind-Gods. This fitting fire feature will help keep you cozy in even the harshest winds.



DIMENSIONS L 40" x W 40" x H 14"
L 48" x W 48" x H 14"

MATERIAL GFRC (Glass Fiber Reinforced Concrete)

BURNER Warming Trends Crossfire Brass Burner 180K BTU

COMPONENTS Key valve, flex hose, metal burner plate

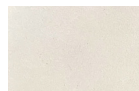
IGNITION Match light with key valve (included) or electronic (available as upgrade)

MEDIA Black rolled lava rock (1-3" size)

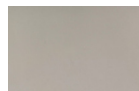
COVER Black marine grade cover with Nisho logo

WEIGHT Approximate weight: 200-400 lbs

COLOR FINISHES



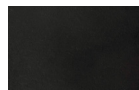
Birch



Smoke



Carbon



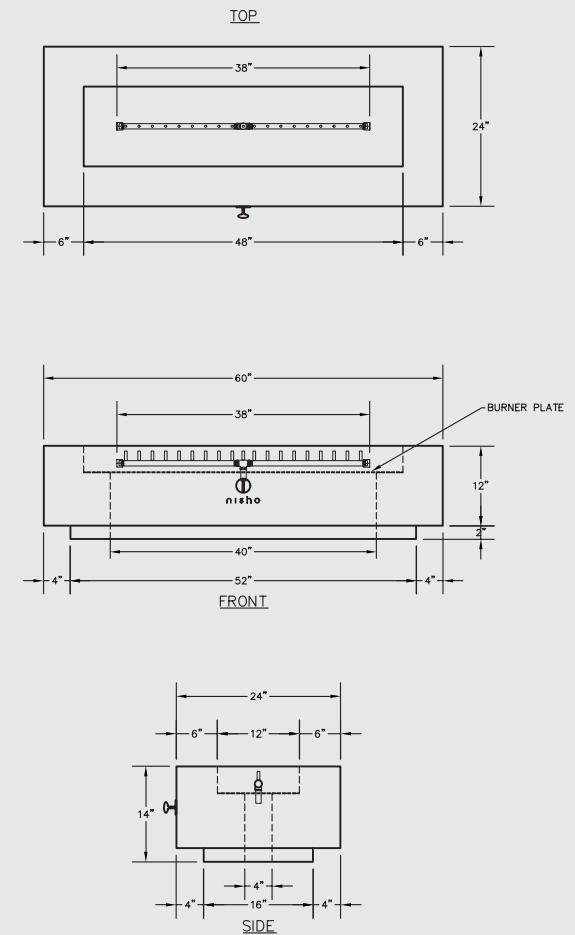
Onyx



**PRICES: \$9,000 (40"),
\$9,200 (48")**

Pallas

Pallas' name was derived from the Greek word "pallō", meaning spear. This sleek yet balanced fire feature is perfect for large gatherings and groups.



DIMENSIONS L 60" x W 24" x H 14"
L 72" x W 24" x H 14"
L 72" x W 36" x H 14"

MATERIAL GFRC (Glass Fiber Reinforced Concrete)

BURNER Warming Trends Crossfire Brass Burner 150K BTU

COMPONENTS Key valve, flex hose, metal burner plate

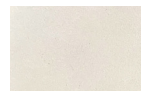
IGNITION Match light with key valve (included) or electronic (available as upgrade)

MEDIA Black rolled lava rock (1-3" size)

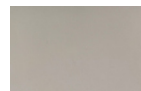
COVER Black marine grade cover with Nisho logo

WEIGHT Approximate weight: 200-400 lbs

COLOR FINISHES



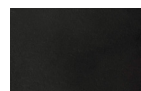
Birch



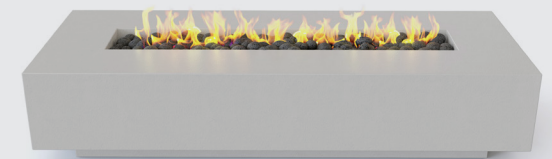
Smoke



Carbon



Onyx



PRICES: \$9,200 (60x24"), \$10,200 (72x24"), \$10,800 (72x36")



Designed in Colorado. Made entirely in America.

We've rigorously tried and tested our entire line of fire features in the most extreme environments, and are proud to be the industry leader in quality, durability, and longevity. When you're ready to elevate your outdoor space, let's talk fire.

n i s h o

2828 N. SPEER BLVD DENVER, CO 80211 | QUESTIONS & INQUIRIES: STUDIONISHO@STUDIONISHO.COM | STUDIONISHO.COM